

# 2001 KHSAA



## GIRLS' SWEET 16®

State Basketball Tournament

March 21-24

E.A. Diddle Arena • Bowling Green

### FINAL GAME STATS

Sat., March 24 - Session 7 - Game 2

Lexington Catholic Lady Knights

vs.

Henderson County Lady Colonels

the  
**GREATEST**  
SHOW

in

**hoops!**

## KHSAA Basketball - Game Box Score

### Lexington Catholic Lady Knights vs. Henderson County Lady Colonels

Date: 03/24/2001 Time: 10:30am CST Site: Girls' Sweet 16-Diddle Arena Attendance: 3,203

#### Visitors: Henderson County Lady Colonels

##	Name	P	FG	3 Pt	FT	PTS	ORB	DRB	TR	PF	AST	TO	BS	ST	MIN
10	* Kera Gibson		7/11	4/7	0/0	18	1	1	2	0	0	1	0	1	32:00
15	* Princess Wimsatt		4/9	2/5	2/2	12	1	0	1	3	8	3	0	3	32:00
23	* Shonte Dixon		2/5	0/0	0/0	4	2	1	3	2	2	0	0	0	20:00
31	* Ann Buchanan		1/5	0/0	2/5	4	1	5	6	5	2	1	1	3	31:39
32	* Brooke Fisher		2/7	0/2	0/0	4	2	3	5	4	1	3	0	1	29:35
12	Courtney Buchanan		0/0	0/0	0/0	0	0	0	0	0	0	0	0	0	0:12
22	Jessica Vorbeck														DNP
24	Beth Duncan														DNP
30	Ashley Farris														DNP
33	Katie Farris		0/1	0/0	1/2	1	0	0	0	1	0	0	0	0	2:14
43	Melissa Jarrett		1/4	0/0	0/0	2	0	1	1	3	0	0	0	0	10:56
44	Whitney Waddell		0/0	0/0	0/0	0	0	0	0	0	0	0	0	0	1:24
	Team						2	2	4						
	<b>Totals</b>		<b>17/42</b>	<b>6/14</b>	<b>5/9</b>	<b>45</b>	<b>9</b>	<b>13</b>	<b>22</b>	<b>18</b>	<b>13</b>	<b>8</b>	<b>1</b>	<b>8</b>	<b>160</b>
	<b>Total FG</b>		1st Half	10/22	45.5%	2nd Half	7/20	35.0%	Game	17/42	40.5%				
	<b>3 PT FG</b>		1st Half	3/6	50.0%	2nd Half	3/8	37.5%	Game	6/14	42.9%				
	<b>Free Throws</b>		1st Half	2/5	40.0%	2nd Half	3/4	75.0%	Game	5/9	55.6%				

#### Home: Lexington Catholic Lady Knights

##	Name	P	FG	3 Pt	FT	PTS	ORB	DRB	TR	PF	AST	TO	BS	ST	MIN
14	* Sarah Schell		4/6	1/2	2/8	11	0	2	2	1	4	5	0	0	32:00
20	* Chelsea Chowning		4/9	0/1	2/2	10	2	1	3	2	0	1	1	0	26:54
21	* Katie Mendenhall		8/10	1/2	2/2	19	0	2	2	3	4	3	0	2	32:00
24	* Tyler Bell		1/3	0/0	0/0	2	1	1	2	0	0	1	0	1	20:58
53	* Katie Michalczyk		3/4	0/0	3/5	9	0	7	7	2	0	0	0	2	27:15
4	Shelby Bell														DNP
10	Ralley Brown														DNP
23	Kaci Hinkel														DNP
25	Regina Carney		0/0	0/0	0/0	0	1	0	1	2	0	0	0	0	15:56
30	Laura Bell		0/0	0/0	0/0	0	0	0	0	0	0	0	0	0	0:20
34	Kelly Dawkins														DNP
35	Megan Mendenhall														DNP
40	Shannon Novosel		1/1	0/0	0/0	2	0	3	3	1	0	0	0	0	4:37
31	Chelsea DiOrio														DNP
54	Alicia Convis														DNP
	Team						1	1	2						
	<b>Totals</b>		<b>21/33</b>	<b>2/5</b>	<b>9/17</b>	<b>53</b>	<b>5</b>	<b>17</b>	<b>22</b>	<b>11</b>	<b>8</b>	<b>10</b>	<b>1</b>	<b>5</b>	<b>160</b>
	<b>Total FG</b>		1st Half	15/20	75.0%	2nd Half	6/13	46.2%	Game	21/33	63.6%				
	<b>3 PT FG</b>		1st Half	2/4	50.0%	2nd Half	0/1	0.00%	Game	2/5	40.0%				
	<b>Free Throws</b>		1st Half	1/5	20.0%	2nd Half	8/12	66.7%	Game	9/17	52.9%				

Free Throw Pts	Hen	Lex	3Pt Points	Hen	Lex	Pts/Possession	Hen	Lex
Pts off Turnovers	5	9	2nd Chance Points	18	6		0.73	0.93
Total Rebounds	13	10	Team Rebounds	6	7	Pts off Bench	3	2
Off Rebound %	22	22	Def Rebound %	4	2	Dead Ball Reb	3	2
Technical Fouls	34.6	27.8		72.2	65.4	Total Rebound %	50.0	50.0
Officials	Hen	None						
	Lex	None						
	Edward Simpson, Glenn Gray, Bob Hall							

	Qtr 1	Qtr 2	Qtr 3	Qtr 4	OT 1	OT 2	OT 3	OT 4	Total
Henderson County Lady Colonels	12	13	11	9	0	0	0	0	45
Lexington Catholic Lady Knights	18	15	8	12	0	0	0	0	53

**KHSAA Basketball - Play by Play Report - Period: 1 (pg 1)**  
**Lexington Catholic Lady Knights vs. Henderson County Lady Colonels**  
 Date: 03/24/2001 Time: 10:30am CST Site: Girls' Sweet 16-Diddle Arena Attendance:

##	Name	Action	Action	Score	Clock	Diff	##	Name	Action	Action		
14	S Schell	Start Game					10	K Gibson	Start Game			
20	C Chowning	Start Game					15	P Wimsatt	Start Game			
21	K Mendenhall	Start Game					23	S Dixon	Start Game			
24	T Bell	Start Game					31	A Buchanan	Start Game			
53	K Michalczyk	Start Game					32	B Fisher	Start Game			
20	C Chowning	Jump Ball Win			1	7:57	31	A Buchanan	Jump Ball Loss			
14	S Schell	FG Made		2-0	1	7:40	+2					
					1	7:13		32	B Fisher	FG Attempt		
				2-2	1	7:09	(T1)	10	K Gibson	FG Made		
14	S Schell	FG Made		4-2	1	6:56	+2			31	A Buchanan Off Reb	
				4-4	1	6:11	(T2)	10	K Gibson	FG Made	15	P Wimsatt Assist
24	T Bell	FG Made	14 S Schell Assist	6-4	1	6:00	+2					
21	K Mendenhall	Def Rebound			1	5:29		31	A Buchanan	FG Attempt		
21	K Mendenhall	FG Made		8-4	1	5:21	+4					
21	K Mendenhall	Def Rebound			1	4:48		23	S Dixon	FG Attempt		
21	K Mendenhall	Turnover			1	4:39						
					1	4:38		31	A Buchanan	Steal		
				8-6	1	4:28	+2	23	S Dixon	FG Made	15	P Wimsatt Assist
					1	4:15		32	B Fisher	Personal Foul		
14	S Schell	FT Attempt	Lady Knights Deadball Reb		1	4:15						
14	S Schell	FT Attempt			1	4:15		31	A Buchanan	Def Rebound		
20	C Chowning	Personal Foul			1	3:59						
53	K Michalczyk	Def Rebound			1	3:40		10	K Gibson	3Pt Attempt		
21	K Mendenhall	Turnover			1	3:29						
					1	3:28		32	B Fisher	Steal		
20	C Chowning	Layup Att	20 C Chowning Off Reb	8-9	1	3:15	-1 (L1)	15	P Wimsatt	3Pt Made	32	B Fisher Assist
20	C Chowning	Putback Made		10-9	1	2:53	+1 (L2)					
Lady Knights	Def Rebound				1	2:18		15	P Wimsatt	3Pt Attempt		
					1	2:16						
25	R Carney	Enter Game	for 24 T Bell		1	2:16						
21	K Mendenhall	Layup Made		12-9	1	1:58	+3					
				12-11	1	1:13	+1	31	A Buchanan	Layup Made	15	P Wimsatt Assist
53	K Michalczyk	Personal Foul		12-12	1	1:13	(T3)	31	A Buchanan	FT Made		
20	C Chowning	3Pt Attempt	25 R Carney Off Reb		1	0:55						
14	S Schell	3Pt Made	21 K Mendenhall Assist	15-12	1	0:45	+3					
					1	0:45		23	S Dixon	Personal Foul		
14	S Schell	FT Attempt			1	0:45		31	A Buchanan	Def Rebound		
					1	0:34		31	A Buchanan	Turnover	(Traveling)	
21	K Mendenhall	3Pt Made	14 S Schell Assist	18-12	1	0:05	+6					

**End of Period Summary Lady Knights 18 Lady Colonels 12**

**Largest Lead: Lady Knights 18 Lady Colonels 12 (6 pts)**  
**Lead in Period: Lady Knights 18 Lady Colonels 12 (6 pts)**

2 for 5 oppo pts  
 2 for 5 pts  
 8/10 for 80.0 %  
 0/3 for 0.00 %

**Turnovers**  
**2nd Chances**  
**Field Goals**  
**Free Throws**

**Lead Changes: 2 Ties: 3**  
**Lead Changes: 2 Ties: 3 (this period)**  
 1 for 3 oppo pts  
 1 for 2 pts  
 5/10 for 50.0 %  
 1/1 for 100 %

**KHSAA Basketball - Play by Play Report - Period: 2 (pg 1)**  
**Lexington Catholic Lady Knights vs. Henderson County Lady Colonels**  
 Date: 03/24/2001 Time: 10:30am CST Site: Girls' Sweet 16-Diddle Arena Attendance:

##	Name	Action	Action	Score	Clock	Diff	##	Name	Action	Action
40	S Novosel	Enter Game	for 53 K Michalczyk	18-14	2 8:00	+4	15	P Wimsatt	Layup Made	
20	C Chowning	FG Made		20-14	2 7:30	+6				
20	C Chowning	Personal Foul			2 6:47					
40	S Novosel	Def Rebound			2 6:47		31	A Buchanan	FT Attempt	Lady Colonels Deadball Reb
14	S Schell	Turnover			2 6:24		31	A Buchanan	FT Attempt	
					2 6:23		15	P Wimsatt	Steal	
					2 6:19		15	P Wimsatt	FG Attempt	23 S Dixon Off Reb
40	S Novosel	Layup Made	21 K Mendenhall Assist	20-16	2 6:15	+4	32	B Fisher	FG Made	23 S Dixon Assist
				22-16	2 5:58	+6				
					2 5:35		32	B Fisher	3Pt Attempt	10 K Gibson Off Reb
40	S Novosel	Def Rebound			2 5:31		23	S Dixon	FG Attempt	
14	S Schell	FG Attempt			2 5:10		31	A Buchanan	Def Rebound	
25	R Carney	Personal Foul			2 5:06					
24	T Bell	Enter Game	for 20 C Chowning		2 5:06					
21	K Mendenhall	Personal Foul			2 4:26					
					2 3:55		15	P Wimsatt	FG Attempt	15 P Wimsatt Off Reb
40	S Novosel	Def Rebound			2 3:51		23	S Dixon	FG Attempt	
21	K Mendenhall	FG Made		24-16	2 3:41	+8				
					2 3:38		Lady Colonels	20 Sec Time Out		
					2 3:38		33	K Farris	Enter Game	for 23 S Dixon
40	S Novosel	Personal Foul			2 3:23					
53	K Michalczyk	Enter Game	for 40 S Novosel		2 3:23		33	K Farris	FT Attempt	Lady Colonels Deadball Reb
					2 3:23		33	K Farris	FT Made	
					2 3:01	+9				
53	K Michalczyk	Layup Made	14 S Schell Assist	24-17	2 3:01	+9				
				26-17	2 2:40	+10	32	B Fisher	Personal Foul	
53	K Michalczyk	FT Made		27-17	2 2:40	+10	33	K Farris	FG Attempt	
14	S Schell	Def Rebound			2 2:33	+12				
53	K Michalczyk	Layup Made	21 K Mendenhall Assist	29-17	2 2:13	+10	32	B Fisher	FG Made	15 P Wimsatt Assist
				29-19	2 1:57	+12				
53	K Michalczyk	Layup Made	21 K Mendenhall Assist	31-19	2 1:34		31	A Buchanan	FG Attempt	
24	T Bell	Def Rebound			2 1:24		33	K Farris	Personal Foul	
					2 1:24		44	W Waddell	Enter Game	for 33 K Farris
					2 1:10		32	B Fisher	Def Rebound	
24	T Bell	FG Attempt		31-22	2 0:47	+9	10	K Gibson	3Pt Made	15 P Wimsatt Assist
				33-22	2 0:34	+11				
14	S Schell	FG Made			2 0:34		15	P Wimsatt	Personal Foul	
					2 0:34		31	A Buchanan	Def Rebound	
14	S Schell	FT Attempt		33-25	2 0:15	+8	10	K Gibson	3Pt Made	15 P Wimsatt Assist
14	S Schell	3Pt Attempt			2 0:00		Lady Colonels	Def Rebound		

**End of Period Summary Lady Knights 33 Lady Colonels 25**

**Largest Lead: Lady Knights 29 Lady Colonels 17 (12 pts)**  
**Lead in Period: Lady Knights 29 Lady Colonels 17 (12 pts)**  
 1 for 2 oppo pts  
 0 for 0 pts  
 7/10 for 70.0 %  
 1/2 for 50.0 %

**Turnovers**  
**2nd Chances**  
**Field Goals**  
**Free Throws**

**Lead Changes: 2 Ties: 3**  
**Lead Changes: 0 Ties: 0 (this period)**  
 0 for 0 oppo pts  
 3 for 2 pts  
 5/12 for 41.7 %  
 1/4 for 25.0 %

## KHSAA Basketball - Game Box Score

### Lexington Catholic Lady Knights vs. Henderson County Lady Colonels

Date: 03/24/2001 Time: 10:30am CST Site: Girls' Sweet 16-Diddle Arena Attendance: Unknown

Visitors: Henderson County Lady Colonels																
##	Name	P	FG	3 Pt	FT	PTS	ORB	DRB	TR	PF	AST	TO	BS	ST	MIN	
10	* Kera Gibson		4/5	2/3	0/0	10	1	0	1	0	0	0	0	0	16:00	
15	* Princess Wimsatt		2/5	1/2	0/0	5	1	0	1	1	6	0	0	1	16:00	
23	* Shonte Dixon		1/4	0/0	0/0	2	1	0	1	1	1	0	0	0	12:22	
31	* Ann Buchanan		1/3	0/0	1/3	3	1	4	5	0	1	1	0	1	16:00	
32	* Brooke Fisher		2/4	0/1	0/0	4	0	1	1	2	1	0	0	1	16:00	
12	Courtney Buchanan														DNP	
22	Jessica Vorbeck														DNP	
24	Beth Duncan														DNP	
30	Ashley Farris														DNP	
33	Katie Farris		0/1	0/0	1/2	1	0	0	0	1	0	0	0	0	2:14	
43	Melissa Jarrett														DNP	
44	Whitney Waddell		0/0	0/0	0/0	0	0	0	0	0	0	0	0	0	1:24	
	Team						0	1	1							
	<b>Totals</b>		<b>10/22</b>	<b>3/6</b>	<b>2/5</b>	<b>25</b>	<b>4</b>	<b>6</b>	<b>10</b>	<b>5</b>	<b>9</b>	<b>1</b>	<b>0</b>	<b>3</b>	<b>80</b>	
	<b>Total FG</b>		1st Half	10/22	45.5%	2nd Half	0/0	0.00%	Game	10/22	45.5%					
	<b>3 PT FG</b>		1st Half	3/6	50.0%	2nd Half	0/0	0.00%	Game	3/6	50.0%					
	<b>Free Throws</b>		1st Half	2/5	40.0%	2nd Half	0/0	0.00%	Game	2/5	40.0%					

Home: Lexington Catholic Lady Knights																
##	Name	P	FG	3 Pt	FT	PTS	ORB	DRB	TR	PF	AST	TO	BS	ST	MIN	
14	* Sarah Schell		4/6	1/2	0/4	9	0	1	1	0	3	1	0	0	16:00	
20	* Chelsea Chowning		2/4	0/1	0/0	4	1	0	1	2	0	0	0	0	10:54	
21	* Katie Mendenhall		4/4	1/1	0/0	9	0	2	2	1	4	2	0	0	16:00	
24	* Tyler Bell		1/2	0/0	0/0	2	0	1	1	0	0	0	0	0	10:50	
53	* Katie Michalczyk		3/3	0/0	1/1	7	0	1	1	1	0	0	0	0	11:23	
4	Shelby Bell														DNP	
10	Railey Brown														DNP	
23	Kaci Hinkel														DNP	
25	Regina Carney		0/0	0/0	0/0	0	1	0	1	1	0	0	0	0	10:16	
30	Laura Bell														DNP	
34	Kelly Dawkins														DNP	
35	Megan Mendenhall														DNP	
40	Shannon Novosel		1/1	0/0	0/0	2	0	3	3	1	0	0	0	0	4:37	
31	Chelsea DiOrio														DNP	
54	Alicia Convis														DNP	
	Team						0	1	1							
	<b>Totals</b>		<b>15/20</b>	<b>2/4</b>	<b>1/5</b>	<b>33</b>	<b>2</b>	<b>9</b>	<b>11</b>	<b>6</b>	<b>7</b>	<b>3</b>	<b>0</b>	<b>0</b>	<b>80</b>	
	<b>Total FG</b>		1st Half	15/20	75.0%	2nd Half	0/0	0.00%	Game	15/20	75.0%					
	<b>3 PT FG</b>		1st Half	2/4	50.0%	2nd Half	0/0	0.00%	Game	2/4	50.0%					
	<b>Free Throws</b>		1st Half	1/5	20.0%	2nd Half	0/0	0.00%	Game	1/5	20.0%					

	Hen	Lex		Hen	Lex		Hen	Lex
Free Throw Pts	2	1	3Pt Points	9	6	Pts/Possession	0.86	1.27
Pts off Turnovers	7	3	2nd Chance Points	4	5	Pts off Bench	1	2
Total Rebounds	10	11	Team Rebounds	1	1	Dead Ball Reb	2	1
Off Rebound %	30.8	25.0	Def Rebound %	75.0	69.2	Total Rebound %	47.6	52.4
Technical Fouls	Hen	None						
	Lex	None						
Officials	Edward Simpson, Glenn Gray, Bob Hall							

	Qtr 1	Qtr 2	Qtr 3	Qtr 4	OT 1	OT 2	OT 3	OT 4	Total
Henderson County Lady Colonels	12	13	0	0	0	0	0	0	25
Lexington Catholic Lady Knights	18	15	0	0	0	0	0	0	33

**KHSAA Basketball - Play by Play Report - Period: 3 (pg 1)**  
**Lexington Catholic Lady Knights vs. Henderson County Lady Colonels**  
**Date: 03/24/2001 Time: 10:30am CST Site: Girls' Sweet 16-Diddle Arena Attendance: 3,203**

##	Name	Action	Action	Score	Clock	Diff	##	Name	Action	Action
20	C Chowning	Enter Game	for 25 R Carney		3 8:00		23	S Dixon	Enter Game	for 44 W Waddell
20	C Chowning	Layup Att			3 8:00		32	B Fisher	Def Rebound	
53	K Michalczyk	Personal Foul			3 7:49		32	B Fisher	3Pt Attempt	
53	K Michalczyk	Def Rebound			3 7:49		32	B Fisher	Def Rebound	
24	T Bell	Layup Att			3 7:40		32	B Fisher	Turnover	(Traveling)
21	K Mendenhall	FG Made	14 S Schell Assist	35-25	3 7:30	+10	31	A Buchanan	FG Attempt	
53	K Michalczyk	Def Rebound			3 7:22		10	K Gibson	3Pt Made	15 P Wimsatt Assist
21	K Mendenhall	FG Made		37-25	3 6:41	+12	10	K Gibson	Turnover	
14	S Schell	Turnover	(Traveling)	37-28	3 6:32	+9	10	K Gibson	Def Rebound	
53	K Michalczyk	Steal			3 6:01		15	P Wimsatt	Turnover	
20	C Chowning	Layup Att			3 5:54		10	K Gibson	Def Rebound	
24	T Bell	Steal			3 5:42		15	P Wimsatt	Turnover	
21	K Mendenhall	3Pt Attempt	24 T Bell Off Reb		3 5:40		32	B Fisher	Personal Foul	for 32 B Fisher
53	K Michalczyk	FG Attempt			3 5:01		43	M Jarrett	Def Rebound	
20	C Chowning	Turnover			3 4:38		15	P Wimsatt	3Pt Made	31 A Buchanan Assist
21	K Mendenhall	Layup Made			3 4:37		31	A Buchanan	Personal Foul	
14	S Schell	Personal Foul			3 4:30		15	P Wimsatt	Steal	
53	K Michalczyk	FG Attempt			3 4:29		10	K Gibson	3Pt Made	23 S Dixon Assist
20	C Chowning	Turnover			3 4:29		32	B Fisher	Enter Game	for 23 S Dixon
21	K Mendenhall	Layup Made			3 4:18		15	P Wimsatt	FT Made	
14	S Schell	Enter Game	for 24 T Bell		3 4:18	+6	15	P Wimsatt	FT Made	
53	K Michalczyk	Steal			3 3:41		15	P Wimsatt	FT Made	
20	C Chowning	Turnover			3 3:30		10	K Gibson	Steal	
21	K Mendenhall	Layup Made			3 3:15		32	B Fisher	Enter Game	
14	S Schell	Personal Foul			3 3:14	+3	15	P Wimsatt	3Pt Made	
25	R Carney	Enter Game			3 2:56	+5	10	K Gibson	3Pt Made	
14	S Schell	Turnover			3 2:45		15	P Wimsatt	FT Made	
53	K Michalczyk	Steal			3 2:18		32	B Fisher	Enter Game	
21	K Mendenhall	FG Made			3 2:18	+4	15	P Wimsatt	FT Made	
53	K Michalczyk	Def Rebound			3 2:18	+3	15	P Wimsatt	FT Made	
14	S Schell	Turnover			3 2:18		10	K Gibson	Steal	
53	K Michalczyk	Steal			3 1:54		10	K Gibson	3Pt Attempt	32 B Fisher Off Reb
21	K Mendenhall	FG Made			3 1:53		10	K Gibson	Turnover	
53	K Michalczyk	Def Rebound			3 1:21		15	P Wimsatt	Turnover	
21	K Mendenhall	FG Made			3 0:52		15	P Wimsatt	3Pt Attempt	
53	K Michalczyk	Def Rebound			3 0:51		15	P Wimsatt	3Pt Attempt	
21	K Mendenhall	FG Made		41-36	3 0:37	+5	15	P Wimsatt	3Pt Attempt	
53	K Michalczyk	Def Rebound			3 0:04		15	P Wimsatt	3Pt Attempt	

**End of Period Summary Lady Knights 41 Lady Colonels 36**

**Largest Lead: Lady Knights 29 Lady Colonels 17 (12 pts)**  
**Lead in Period: Lady Knights 37 Lady Colonels 25 (12 pts)**  
 3 for 3 oppo pts  
 1 for 0 pts  
 4/9 for 44.4 %  
 0/0 for 0.00 %

**Turnovers**  
**2nd Chances**  
**Field Goals**  
**Free Throws**

**Lead Changes: 2 Ties: 3**  
**Lead Changes: 0 Ties: 0 (this period)**  
 4 for 4 oppo pts  
 1 for 0 pts  
 3/7 for 42.9 %  
 2/2 for 100 %

**KHSAA Basketball - Play by Play Report - Period: 4 (pg 1)**  
**Lexington Catholic Lady Knights vs. Henderson County Lady Colonels**  
**Date: 03/24/2001 Time: 10:30am CST Site: Girls' Sweet 16-Diddle Arena Attendance: 3,203**

## Name	Action	Action	Score	Clock	Diff	## Name	Action	Action
20 C Chowning	Def Rebound			4 7:33		43 M Jarrett	FG Attempt	
				4 7:33		31 A Buchanan	Personal Foul	
20 C Chowning	Layup Made		43-36	4 7:19	+7			
			43-38	4 6:51	+5	10 K Gibson	FG Made	15 P Wimsatt Assist
20 C Chowning	Layup Att			4 6:20		Lady Colonels	Def Rebound	
53 K Michalczyk	Def Rebound			4 5:56		10 K Gibson	FG Attempt	
				4 5:48		43 M Jarrett	Personal Foul	
				4 5:21		15 P Wimsatt	Personal Foul	
				4 5:21		Lady Colonels	20 Sec Time Out	
14 S Schell	Turnover			4 5:14				
			43-40	4 5:13		31 A Buchanan	Steal	
				4 4:52	+3	43 M Jarrett	FG Made	
21 K Mendenhall	Turnover			4 4:40				
				4 4:39		31 A Buchanan	Steal	
25 R Carney	Personal Foul			4 4:38				
24 T Bell	Enter Game	for 25 R Carney		4 4:38				
			43-41	4 4:38	+2	31 A Buchanan	FT Attempt	Lady Colonels Deadball Reb
				4 4:38		31 A Buchanan	FT Made	
				4 4:36		43 M Jarrett	Personal Foul	
				4 4:19		43 M Jarrett	Personal Foul	
14 S Schell	FT Attempt			4 4:19		31 A Buchanan	Def Rebound	
				4 4:02		31 A Buchanan	Layup Att	32 B Fisher Off Reb
20 C Chowning	Block			4 4:02		32 B Fisher	Putback Att	Lady Colonels Off Reb
				4 3:39		43 M Jarrett	FG Attempt	Lady Colonels Off Reb
				4 3:00				
53 K Michalczyk	Def Rebound			4 3:00		10 K Gibson	3Pt Attempt	
20 C Chowning	FG Made		45-41	4 2:41	+4			
21 K Mendenhall	Personal Foul			4 2:09				
				4 2:09				
53 K Michalczyk	Def Rebound			4 1:56		43 M Jarrett	FG Attempt	
				4 1:56		31 A Buchanan	Personal Foul	
				4 1:56		23 S Dixon	Enter Game	for 43 M Jarrett
53 K Michalczyk	FT Made		46-41	4 1:56	+5			
53 K Michalczyk	FT Attempt			4 1:46		23 S Dixon	Def Rebound	
				4 1:46		32 B Fisher	Turnover	(Traveling)
Lady Knights	20 Sec Time Out			4 1:22				
				4 0:58		15 P Wimsatt	Personal Foul	
14 S Schell	FT Attempt	20 C Chowning Off Reb		4 0:58				
				4 0:55		32 B Fisher	Personal Foul	
				4 0:55		Lady Colonels	Time Out	
20 C Chowning	FT Made		47-41	4 0:55	+6			
20 C Chowning	FT Made		48-41	4 0:55	+7			
				4 0:51		15 P Wimsatt	Turnover	
21 K Mendenhall	Steal			4 0:49				
24 T Bell	Turnover			4 0:50				
				4 0:41		32 B Fisher	Turnover	
21 K Mendenhall	Steal			4 0:40				
21 K Mendenhall	Layup Att	Lady Knights Off Reb		4 0:40		31 A Buchanan	Block	
				4 0:35		31 A Buchanan	Personal Foul	
53 K Michalczyk	FT Attempt	Lady Knights Deadball Reb		4 0:35				
53 K Michalczyk	FT Made		49-41	4 0:35	+8			
			49-43	4 0:23	+6	32 B Fisher	FG Attempt	23 S Dixon Off Reb
				4 0:23		23 S Dixon	Putback Made	
				4 0:23		Lady Colonels	Time Out	
				4 0:21		43 M Jarrett	Enter Game	for 32 B Fisher
				4 0:21		31 A Buchanan	Personal Foul	
				4 0:21		32 B Fisher	Enter Game	for 31 A Buchanan
21 K Mendenhall	FT Made		50-43	4 0:21	+7			
21 K Mendenhall	FT Made		51-43	4 0:21	+8			
21 K Mendenhall	Personal Foul			4 0:20				
30 L Bell	Enter Game	for 53 K Michalczyk		4 0:20				
			51-45	4 0:13	+6	15 P Wimsatt	Layup Made	
				4 0:12		Lady Colonels	Time Out	
53 K Michalczyk	Enter Game	for 30 L Bell		4 0:12				
30 L Bell	Enter Game	for 24 T Bell		4 0:12				
				4 0:12		12 C Buchanan	Enter Game	for 32 B Fisher
14 S Schell	FT Made		52-45	4 0:12	+7	23 S Dixon	Personal Foul	
14 S Schell	FT Made		53-45	4 0:12	+8			
14 S Schell	Def Rebound			4 0:04		15 P Wimsatt	3Pt Attempt	
14 S Schell	Turnover			4 0:00				
				4 0:00		15 P Wimsatt	Steal	

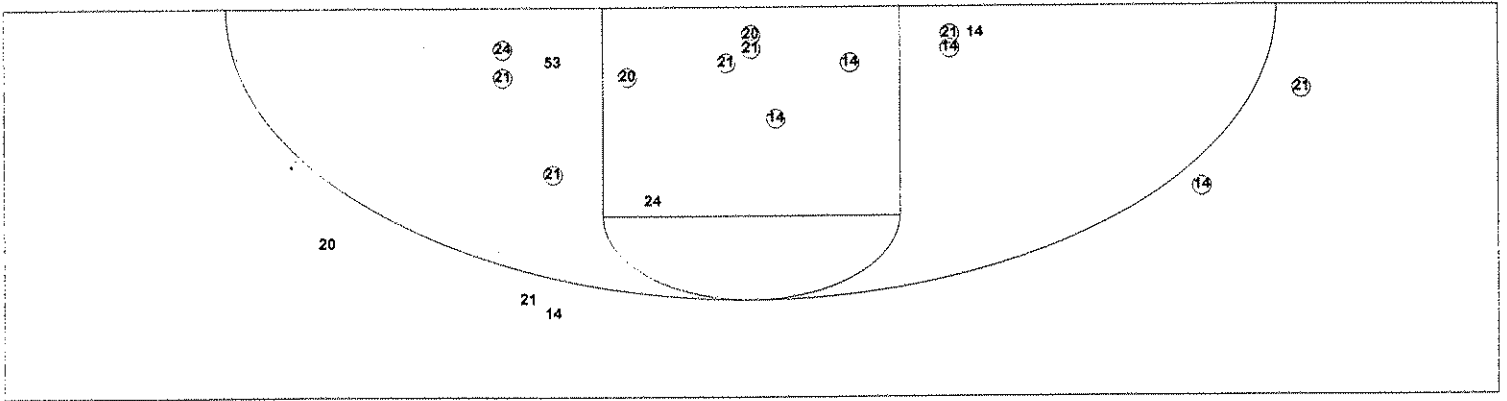
**End of Period Summary Lady Knights 53 Lady Colonels 45**

**Largest Lead: Lady Knights 29 Lady Colonels 17 (12 pts)**  
**Lead In Period: Lady Knights 49 Lady Colonels 41 (8 pts)**  
 4 for 3 oppo pts  
 2 for 2 pts  
 2/4 for 50.0 %  
 8/12 for 66.7 %

Turnovers  
 2nd Chances  
 Field Goals  
 Free Throws

**Lead Changes: 2 Ties: 3**  
**Lead Changes: 0 Ties: 0 (this period)**  
 3 for 3 oppo pts  
 4 for 2 pts  
 4/13 for 30.8 %  
 1/2 for 50.0 %

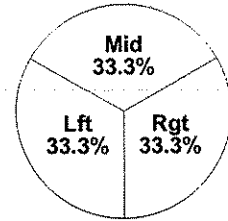
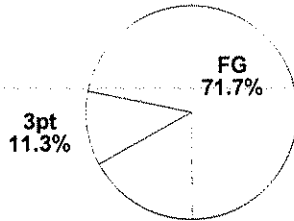
**KHSAA Basketball - TEAM SHOT CHART for the Lady Knights**  
**Lexington Catholic Lady Knights vs. Henderson County Lady Colonels**  
**DATE: 03/24/2001 TIME: 10:30am CST SITE: Girls' Sweet 16-Diddle Arena**



Shot Summary	M/A	%	PTS
3Pt FG	2/5	40.0%	6
2Pt FG	19/28	67.9%	38
Layups - L	4/9	44.4%	8
Layups - R	3/4	75.0%	6
Dunks	0/0	0.0%	0
Putbacks	1/1	100.0%	2
Overall Shooting	21/33	63.6%	44
Free Throws	9/17	52.9%	9
Total Points			53

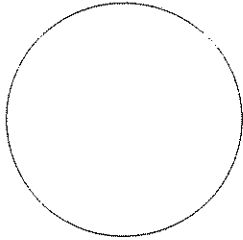
Scoring Distribution

Scoring Locations

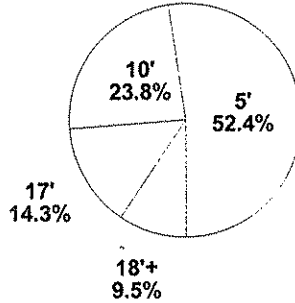


By Period	FG	FGA	FG%	3Pt	3PA	3P%	FT	FTA	FT%	PTS	ORB	DRB	TR	PF	AST	TO	BS	ST	P/S
1st Period	8	10	80.0	2	3	66.7	0	3	0.0	18	2	4	6	2	3	2	0	0	1.64
2nd Period	7	10	70.0	0	1	0.0	1	2	50.0	15	0	5	5	4	4	1	0	0	1.36
3rd Period	4	9	44.4	0	1	0.0	0	0	0.0	8	1	3	4	2	1	3	0	3	0.89
4th Period	2	4	50.0	0	0	0.0	8	12	66.7	12	2	5	7	3	0	4	1	2	1.20
Game	21	33	63.6	2	5	40.0	9	17	52.9	53	5	17	22	11	8	10	1	5	1.29

Scoring Breakdown

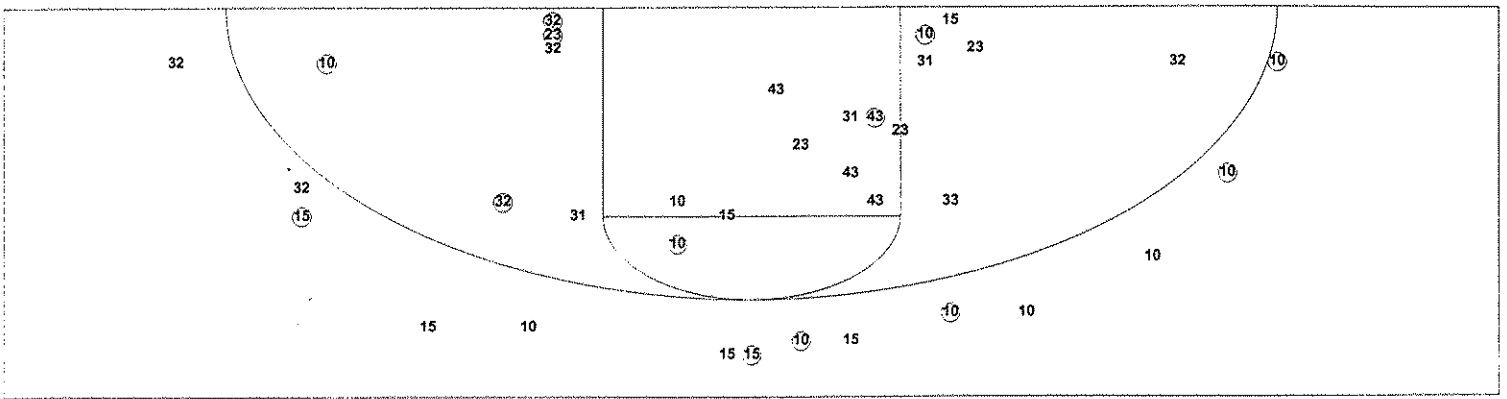


Scoring Range



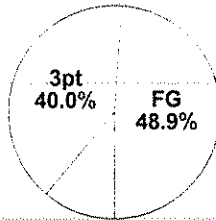


**KHSAA Basketball - TEAM SHOT CHART for the Lady Colonels**  
**Lexington Catholic Lady Knights vs. Henderson County Lady Colonels**  
**DATE: 03/24/2001 TIME: 10:30am CST SITE: Girls' Sweet 16-Diddle Arena**

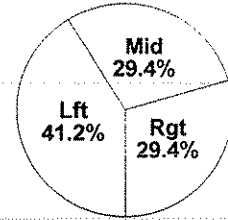


Shot Summary	M/A	%	PTS
3Pt FG	6/14	42.9%	18
2Pt FG	11/28	39.3%	22
Layups - L	2/2	100.0%	4
Layups - R	1/2	50.0%	2
Dunks	0/0	0.0%	0
Putbacks	1/2	50.0%	2
Overall Shooting	17/42	40.5%	40
Free Throws	5/9	55.6%	5
Total Points			45

Scoring Distribution

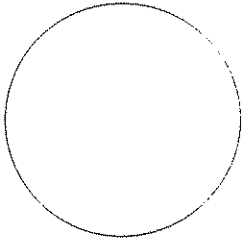


Scoring Locations



By Period	FG	FGA	FG%	3Pt	3PA	3P%	FT	FTA	FT%	FT		ORB	DRB	TR	PF	AST	TO	BS	ST	P/S
										PTS	PTS									
1st Period	5	10	50.0	1	3	33.3	1	1	100	12	1	2	3	2	5	1	0	2	1.20	
2nd Period	5	12	41.7	2	3	66.7	1	4	25.0	13	3	4	7	3	4	0	0	1	0.93	
3rd Period	3	7	42.9	3	6	50.0	2	2	100	11	1	4	5	2	3	4	0	2	1.38	
4th Period	4	13	30.8	0	2	0.00	1	2	50.0	9	4	3	7	11	1	3	1	3	0.64	
Game	17	42	40.5	6	14	42.9	5	9	55.6	45	9	13	22	18	13	8	1	8	0.98	

Scoring Breakdown



Scoring Range

